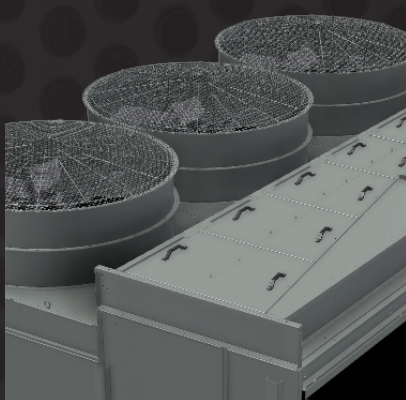




# Series 1500E and XE-Series Engineering Data

BAC AUSTRALIA

BAC's Series 1500 Cooling Tower parallels the technology and successes of BAC's Series 3000 Cooling Tower in a compact footprint. The Series 1500 Cooling Tower is the industry's most serviceable unit without compromising performance and fit. Newly redesigned, the Series 1500E Cooling Tower offers Extreme Efficiency (XE) models which are at least two times more efficient than the minimum requirements established in ASHRAE 90.1 and further reduce the unit's operating cost. Its serviceability, easy maintenance and superior winter operation, and single air intake make it an outstanding choice for new installations and an ideal replacement unit.



Easy Access to the Spray System



Series 1500E Cooling Tower



Spacious Plenum with Standard Internal Walkway



# BAC's Series 1500E: Greatest Layout Flexibility

Single Air Intake  
Crossflow Capacities, Independent Fan Drives  
467kW to 3,295kW in a Single Cell

▽  
Greatest Layout  
Flexibility

▽  
Industry-Leading  
Energy Efficiency

▽  
Easiest  
to Maintain

▽  
Reliable and Quiet  
Operation

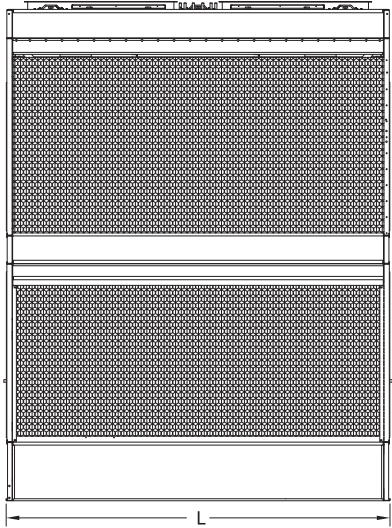
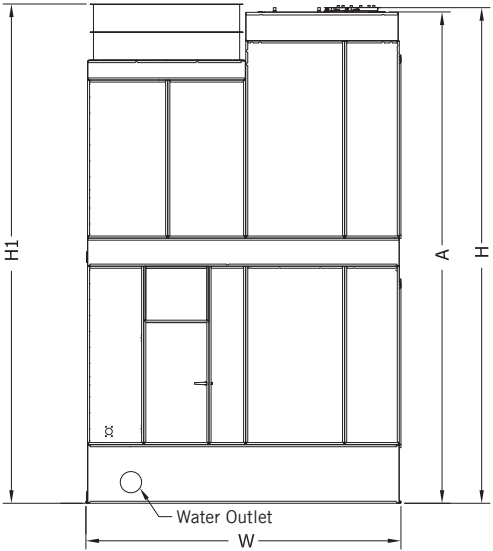
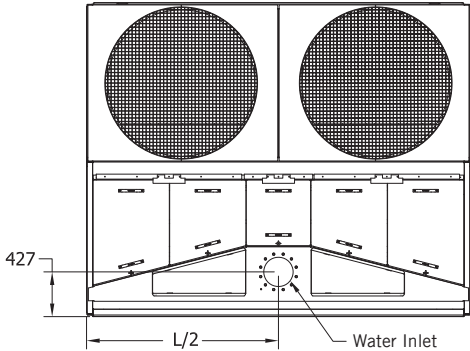
▽  
Superior Winter  
Operation



# Series 1500E Engineering Data



NOTE: Do not use for construction. Refer to factory certified dimensions. This catalog includes data current at the time of publication, which should be reconfirmed at the time of purchase. Up-to-date engineering data, free product selection software, and more can be found at [www.BaltimoreAircoil.com.au](http://www.BaltimoreAircoil.com.au)



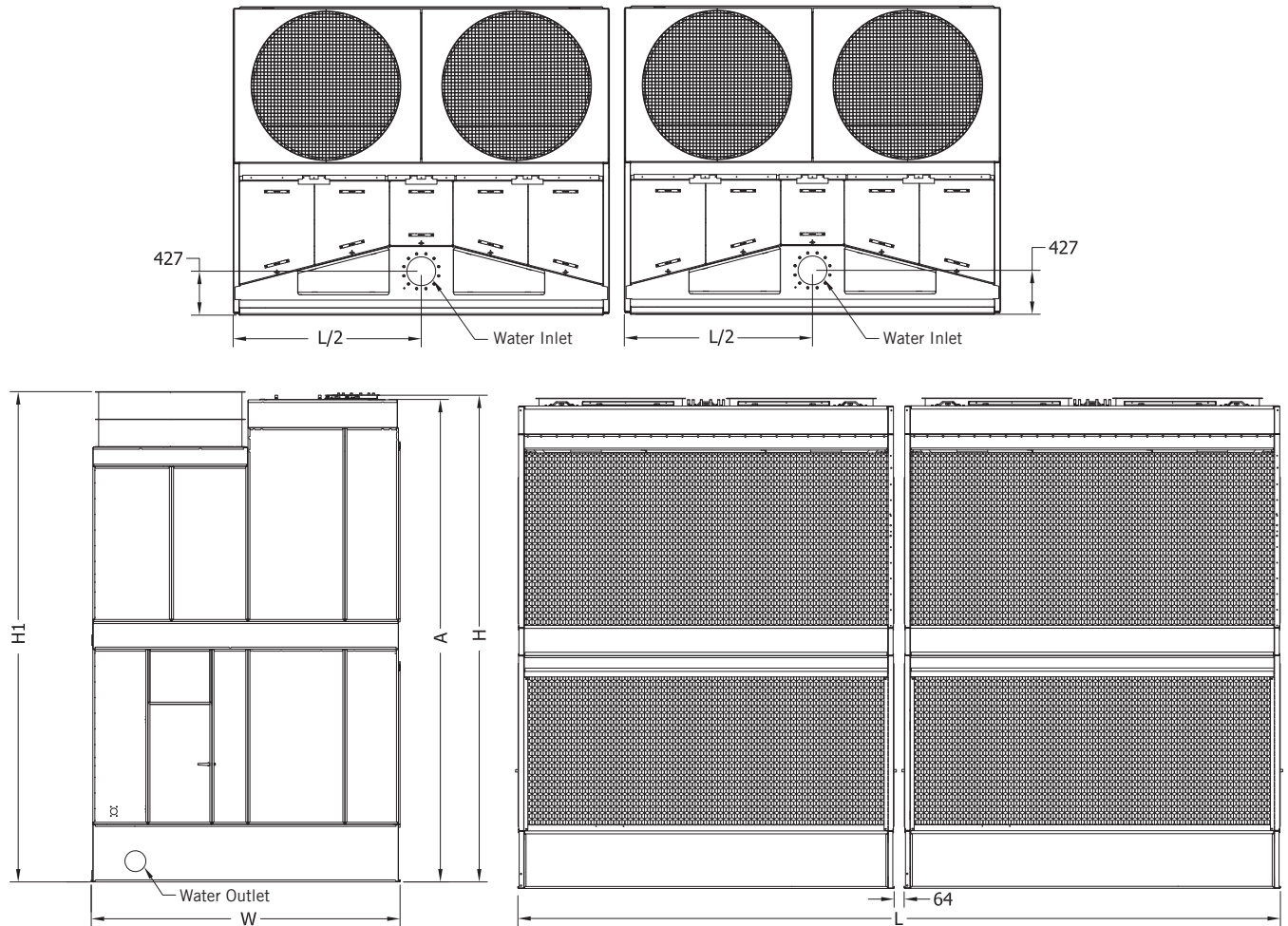
**NOTES:**

- 1. The specific size of the inlet and outlet connection may vary with the cooling water design flow rate. Consult unit print for dimensions.





NOTE: Do not use for construction. Refer to factory certified dimensions. This catalog includes data current at the time of publication, which should be reconfirmed at the time of purchase. Up-to-date engineering data, free product selection software, and more can be found at [www.BaltimoreAircoil.com.au](http://www.BaltimoreAircoil.com.au)



NOTES:

1. The specific size of the inlet and outlet connection may vary with the cooling water design flow rate. Consult unit print for dimensions.

# Series 1500E Single Cell Data

Model Number	Motor (kw)	Fan (m <sup>3</sup> /h)	Weight(kg)			Dimensions (mm)				
			Operating <sup>[2]</sup>	Shipping	Heaviest Section	L	W	H	H1	A
S15E-0809-06GE	(3) 2.2	62,389	3,373	1,734	1,734	2,737	2,394	3,058	3,058	3,016
S15E-0809-06HE	(3) 4	73,479	3,387	1,748	1,748	2,737	2,394	3,058	3,058	3,016
S15E-0812-06GE	(3) 2.2	68,877	4,495	2,079	2,079	3,651	2,394	3,058	3,058	3,016
S15E-0812-06HE	(3) 4	81,419	4,508	2,093	2,093	3,651	2,394	3,058	3,058	3,016
S15E-0812-06JE	(3) 5.5	90,163	4,576	2,161	2,161	3,651	2,394	3,058	3,058	3,016
S15E-1012-06HE	(2) 4	86,663	5,108	2,438	2,438	3,651	2,997	3,048	3,121	3,016
S15E-1012-06JE	(2) 5.5	95,597	5,153	2,483	2,483	3,651	2,997	3,048	3,121	3,016
S15E-1012-06KE	(2) 7.5	105,940	5,167	2,497	2,497	3,651	2,997	3,048	3,121	3,016
S15E-1012-09JE	(2) 5.5	111,292	6,642	3,201	1,916	3,651	2,997	4,321	4,388	4,280
S15E-1012-09KE	(2) 7.5	123,181	6,656	3,214	1,930	3,651	2,997	4,321	4,388	4,280
S15E-1012-09L1	(2) 11	130,898	6,769	3,328	2,043	3,651	2,997	4,321	4,388	4,280
S15E-1012-09LE	(2) 11	138,282	6,769	3,328	2,043	3,651	2,997	4,321	4,388	4,280
S15E-1012-10JE	(2) 5.5	114,892	6,919	3,351	1,916	3,651	2,997	4,728	4,794	4,686
S15E-1012-10KE	(2) 7.5	127,171	6,933	3,364	1,930	3,651	2,997	4,728	4,794	4,686
S15E-1012-10L1	(2) 11	135,134	7,046	3,478	2,043	3,651	2,997	4,728	4,794	4,686
S15E-1012-10LE	(2) 11	142,748	7,046	3,478	2,043	3,651	2,997	4,728	4,794	4,686
S15E-1018-09JE	(3) 5.5	167,641	10,769	4,962	2,928	5,480	2,997	4,474	4,601	4,432
S15E-1018-09KE	(3) 7.5	185,578	10,787	4,980	2,946	5,480	2,997	4,474	4,601	4,432
S15E-1018-09LE	(3) 11	208,361	10,960	5,153	3,119	5,480	2,997	4,474	4,601	4,432
S15E-1018-10JE	(3) 5.5	173,005	11,268	5,167	2,928	5,480	2,997	4,880	5,007	4,839
S15E-1018-10KE	(3) 7.5	191,528	11,286	5,185	2,946	5,480	2,997	4,880	5,007	4,839
S15E-1018-10LE	(3) 11	215,030	11,459	5,357	3,119	5,480	2,997	4,880	5,007	4,839
S15E-1212-07JE	(2) 5.5	111,140	6,429	2,865	2,865	3,651	3,607	3,454	3,527	3,413
S15E-1212-07KE	(2) 7.5	122,635	6,442	2,878	2,878	3,651	3,607	3,454	3,527	3,413
S15E-1212-07L1	(2) 11	130,096	6,556	2,992	2,992	3,651	3,607	3,454	3,527	3,413
S15E-1212-09JE	(2) 5.5	125,036	7,614	3,659	2,111	3,651	3,607	4,321	4,388	4,280
S15E-1212-09KE	(2) 7.5	137,827	7,627	3,673	2,125	3,651	3,607	4,321	4,388	4,280
S15E-1212-09L1	(2) 11	146,111	7,741	3,786	2,238	3,651	3,607	4,321	4,388	4,280
S15E-1212-09LE	(2) 11	154,037	7,741	3,786	2,238	3,651	3,607	4,321	4,388	4,280
S15E-1212-10KE	(2) 7.5	143,782	7,950	3,836	2,125	3,651	3,607	4,728	4,794	4,686
S15E-1212-10L1	(2) 11	152,390	8,063	3,950	2,238	3,651	3,607	4,728	4,794	4,686
S15E-1212-10LE	(2) 11	160,620	8,063	3,950	2,238	3,651	3,607	4,728	4,794	4,686
S15E-1212-10ME	(2) 15	176,422	8,118	4,004	2,293	3,651	3,607	4,728	4,794	4,686
S15E-1212-11KE	(2) 7.5	149,002	8,345	4,000	2,125	3,651	3,607	5,134	5,201	5,093
S15E-1212-11LE	(2) 11	166,361	8,458	4,113	2,238	3,651	3,607	5,134	5,201	5,093
S15E-1212-11ME	(2) 15	182,637	8,513	4,168	2,293	3,651	3,607	5,134	5,201	5,093
S15E-1212-12KE	(2) 7.5	153,618	8,513	4,168	2,125	3,651	3,607	5,540	5,607	5,499
S15E-1212-12LE	(2) 11	171,440	8,626	4,281	2,238	3,651	3,607	5,540	5,607	5,499
S15E-1212-12ME	(2) 15	188,137	8,680	4,336	2,293	3,651	3,607	5,540	5,607	5,499



Model Number	Motor (kw)	Fan (m <sup>3</sup> /h)	Weight(kg)			Dimensions (mm)				
			Operating <sup>[2]</sup>	Shipping	Heaviest Section	L	W	H	H1	A
S15E-1218-07JE	(3) 5.5	167,918	10,655	4,395	4,395	5,480	3,607	3,607	3,740	3,566
S15E-1218-07KE	(3) 7.5	185,302	10,674	4,413	4,413	5,480	3,607	3,607	3,740	3,566
S15E-1218-07L1	(3) 11	196,585	10,846	4,585	4,585	5,480	3,607	3,607	3,740	3,566
S15E-1218-09JE	(3) 5.5	188,710	12,358	5,507	3,164	5,480	3,607	4,474	4,601	4,432
S15E-1218-09KE	(3) 7.5	208,065	12,376	5,525	3,183	5,480	3,607	4,474	4,601	4,432
S15E-1218-09L1	(3) 11	220,579	12,549	5,698	3,355	5,480	3,607	4,474	4,601	4,432
S15E-1218-09LE	(3) 11	232,553	12,549	5,698	3,355	5,480	3,607	4,474	4,601	4,432
S15E-1218-10KE	(3) 7.5	216,976	12,966	5,757	3,183	5,480	3,607	4,880	5,007	4,839
S15E-1218-10L1	(3) 11	229,983	13,139	5,929	3,355	5,480	3,607	4,880	5,007	4,839
S15E-1218-10LE	(3) 11	242,416	13,139	5,929	3,355	5,480	3,607	4,880	5,007	4,839
S15E-1218-10ME	(3) 15	266,288	13,220	6,011	3,437	5,480	3,607	4,880	5,007	4,839
S15E-1218-11KE	(3) 7.5	224,806	13,320	5,993	3,183	5,480	3,607	5,286	5,413	5,245
S15E-1218-11L1	(3) 11	238,218	13,493	6,165	3,355	5,480	3,607	5,286	5,413	5,245
S15E-1218-11LE	(3) 11	251,032	13,493	6,165	3,355	5,480	3,607	5,286	5,413	5,245
S15E-1218-11ME	(3) 15	275,618	13,575	6,247	3,437	5,480	3,607	5,286	5,413	5,245
S15E-1218-12KE	(3) 7.5	231,724	13,797	6,233	3,183	5,480	3,607	5,693	5,820	5,652
S15E-1218-12L1	(3) 11	245,496	13,970	6,406	3,355	5,480	3,607	5,693	5,820	5,652
S15E-1218-12LE	(3) 11	258,649	13,970	6,406	3,355	5,480	3,607	5,693	5,820	5,652
S15E-1218-12ME	(3) 15	283,869	14,051	6,488	3,437	5,480	3,607	5,693	5,820	5,652



**NOTES:**

1. Operating weight is based on the water level in the cold water basin at overflow height. If a lower operating weight is needed to meet design requirements, your local BAC Representative can provide additional assistance.
2. Unless otherwise indicated all connections 80nb and smaller are MPT. Connections 100nb and larger are beveled for welding and mechanically grooved.

**Do not use for construction. Refer to factory certified dimensions. This catalog includes data current at the time of publication, which should be reconfirmed at the time of purchase.**

# Series 1500 XE Engineering Data

Model Number	Motor (kw)	Fan (m <sup>3</sup> /h)	Weight(kg)			Dimensions (mm)				
			Operating <sup>(2)</sup>	Shipping	Heaviest Section	L	W	H	H1	A
XES15E-0809-06DE	(3) 0.75	44,225	3,305	1,666	1,666	2,737	2,394	3,058	3,058	3,016
XES15E-0809-06EE	(3) 1.1	49,939	3,305	1,666	1,666	2,737	2,394	3,058	3,058	3,016
XES15E-0809-06FE	(3) 1.5	55,292	3,332	1,693	1,693	2,737	2,394	3,058	3,058	3,016
XES15E-0812-06DE	(3) 0.75	48,478	4,427	2,011	2,011	3,651	2,394	3,058	3,058	3,016
XES15E-0812-06EE	(3) 1.1	54,871	4,427	2,011	2,011	3,651	2,394	3,058	3,058	3,016
XES15E-0812-06FE	(3) 1.5	60,880	4,454	2,038	2,038	3,651	2,394	3,058	3,058	3,016
XES15E-1012-06EE	(2) 1.1	57,210	5,053	2,384	2,384	3,651	2,997	3,048	3,121	3,016
XES15E-1012-06FE	(2) 1.5	63,255	5,071	2,402	2,402	3,651	2,997	3,048	3,121	3,016
XES15E-1012-06GE	(2) 2.2	71,262	5,098	2,429	2,429	3,651	2,997	3,048	3,121	3,016
XES15E-1012-09EE	(2) 1.1	66,726	6,542	3,101	1,816	3,651	2,997	4,321	4,388	4,280
XES15E-1012-09FE	(2) 1.5	73,789	6,560	3,119	1,834	3,651	2,997	4,321	4,388	4,280
XES15E-1012-09GE	(2) 2.2	83,118	6,588	3,146	1,861	3,651	2,997	4,321	4,388	4,280
XES15E-1012-09HE	(2) 4	100,983	6,597	3,155	1,870	3,651	2,997	4,321	4,388	4,280
XES15E-1012-10EE	(2) 1.1	68,816	6,819	3,251	1,816	3,651	2,997	4,728	4,794	4,686
XES15E-1012-10FE	(2) 1.5	76,124	6,837	3,269	1,834	3,651	2,997	4,728	4,794	4,686
XES15E-1012-10GE	(2) 2.2	85,774	6,864	3,296	1,861	3,651	2,997	4,728	4,794	4,686
XES15E-1012-10HE	(2) 4	104,239	6,874	3,305	1,870	3,651	2,997	4,728	4,794	4,686
XES15E-1018-09EE	(3) 1.1	100,436	10,619	4,812	2,778	5,480	2,997	4,474	4,601	4,432
XES15E-1018-09FE	(3) 1.5	111,081	10,646	4,840	2,806	5,480	2,997	4,474	4,601	4,432
XES15E-1018-09GE	(3) 2.2	125,148	10,687	4,881	2,847	5,480	2,997	4,474	4,601	4,432
XES15E-1018-09HE	(3) 4	152,084	10,701	4,894	2,860	5,480	2,997	4,474	4,601	4,432
XES15E-1018-10EE	(3) 1.1	103,540	11,118	5,017	2,778	5,480	2,997	4,880	5,007	4,839
XES15E-1018-10FE	(3) 1.5	114,552	11,146	5,044	2,806	5,480	2,997	4,880	5,007	4,839
XES15E-1018-10GE	(3) 2.2	129,096	11,187	5,085	2,847	5,480	2,997	4,880	5,007	4,839
XES15E-1018-10HE	(3) 4	156,937	11,200	5,098	2,860	5,480	2,997	4,880	5,007	4,839
XES15E-1212-07EE	(2) 1.1	67,759	6,329	2,765	2,765	3,651	3,607	3,454	3,527	3,413
XES15E-1212-07FE	(2) 1.5	74,683	6,347	2,783	2,783	3,651	3,607	3,454	3,527	3,413
XES15E-1212-07GE	(2) 2.2	83,801	6,374	2,810	2,810	3,651	3,607	3,454	3,527	3,413
XES15E-1212-07HE	(2) 4	101,156	6,383	2,819	2,819	3,651	3,607	3,454	3,527	3,413
XES15E-1212-09EE	(2) 1.1	76,462	7,514	3,559	2,011	3,651	3,607	4,321	4,388	4,280
XES15E-1212-09FE	(2) 1.5	84,250	7,532	3,578	2,029	3,651	3,607	4,321	4,388	4,280
XES15E-1212-09GE	(2) 2.2	94,473	7,559	3,605	2,057	3,651	3,607	4,321	4,388	4,280
XES15E-1212-09HE	(2) 4	113,893	7,568	3,614	2,066	3,651	3,607	4,321	4,388	4,280
XES15E-1212-10EE	(2) 1.1	79,939	7,836	3,723	2,011	3,651	3,607	4,728	4,794	4,686
XES15E-1212-10FE	(2) 1.5	88,065	7,854	3,741	2,029	3,651	3,607	4,728	4,794	4,686
XES15E-1212-10GE	(2) 2.2	98,719	7,881	3,768	2,057	3,651	3,607	4,728	4,794	4,686
XES15E-1212-10HE	(2) 4	118,921	7,891	3,777	2,066	3,651	3,607	4,728	4,794	4,686
XES15E-1212-10JE	(2) 5.5	130,489	7,936	3,823	2,111	3,651	3,607	4,728	4,794	4,686
XES15E-1212-11EE	(2) 1.1	82,974	8,231	3,886	2,011	3,651	3,607	5,134	5,201	5,093
XES15E-1212-11FE	(2) 1.5	91,400	8,249	3,904	2,029	3,651	3,607	5,134	5,201	5,093
XES15E-1212-11GE	(2) 2.2	102,437	8,276	3,932	2,057	3,651	3,607	5,134	5,201	5,093
XES15E-1212-11HE	(2) 4	123,336	8,286	3,941	2,066	3,651	3,607	5,134	5,201	5,093
XES15E-1212-11JE	(2) 5.5	135,286	8,331	3,986	2,111	3,651	3,607	5,134	5,201	5,093





Model Number	Motor (kw)	Fan (m <sup>3</sup> /h)	Weight(kg)			Dimensions (mm)				
			Operating <sup>(2)</sup>	Shipping	Heaviest Section	L	W	H	H1	A
XES15E-1212-12EE	(2) 1.1	85,629	8,399	4,054	2,043	3,651	3,607	5,540	5,607	5,499
XES15E-1212-12FE	(2) 1.5	94,322	8,417	4,072	2,043	3,651	3,607	5,540	5,607	5,499
XES15E-1212-12GE	(2) 2.2	105,707	8,444	4,100	2,057	3,651	3,607	5,540	5,607	5,499
XES15E-1212-12HE	(2) 4	127,228	8,453	4,109	2,066	3,651	3,607	5,540	5,607	5,499
XES15E-1212-12JE	(2) 5.5	139,521	8,499	4,154	2,111	3,651	3,607	5,540	5,607	5,499
XES15E-1218-07EE	(3) 1.1	102,322	10,506	4,245	4,245	5,480	3,607	3,607	3,740	3,566
XES15E-1218-07FE	(3) 1.5	112,785	10,533	4,272	4,272	5,480	3,607	3,607	3,740	3,566
XES15E-1218-07GE	(3) 2.2	126,563	10,574	4,313	4,313	5,480	3,607	3,607	3,740	3,566
XES15E-1218-07HE	(3) 4	152,820	10,587	4,327	4,327	5,480	3,607	3,607	3,740	3,566
XES15E-1218-09EE	(3) 1.1	115,326	12,208	5,357	3,015	5,480	3,607	4,474	4,601	4,432
XES15E-1218-09FE	(3) 1.5	127,088	12,235	5,384	3,042	5,480	3,607	4,474	4,601	4,432
XES15E-1218-09GE	(3) 2.2	142,531	12,276	5,425	3,083	5,480	3,607	4,474	4,601	4,432
XES15E-1218-09HE	(3) 4	171,871	12,290	5,439	3,096	5,480	3,607	4,474	4,601	4,432
XES15E-1218-10EE	(3) 1.1	120,529	12,798	5,589	3,015	5,480	3,607	4,880	5,007	4,839
XES15E-1218-10FE	(3) 1.5	132,799	12,826	5,616	3,042	5,480	3,607	4,880	5,007	4,839
XES15E-1218-10GE	(3) 2.2	148,890	12,866	5,657	3,083	5,480	3,607	4,880	5,007	4,839
XES15E-1218-10HE	(3) 4	179,410	12,880	5,670	3,096	5,480	3,607	4,880	5,007	4,839
XES15E-1218-10JE	(3) 5.5	196,892	12,948	5,739	3,164	5,480	3,607	4,880	5,007	4,839
XES15E-1218-11EE	(3) 1.1	125,063	13,152	5,825	3,015	5,480	3,607	5,286	5,413	5,245
XES15E-1218-11FE	(3) 1.5	137,782	13,180	5,852	3,042	5,480	3,607	5,286	5,413	5,245
XES15E-1218-11GE	(3) 2.2	154,454	13,220	5,893	3,083	5,480	3,607	5,286	5,413	5,245
XES15E-1218-11HE	(3) 4	186,024	13,234	5,907	3,096	5,480	3,607	5,286	5,413	5,245
XES15E-1218-11JE	(3) 5.5	204,080	13,302	5,975	3,164	5,480	3,607	5,286	5,413	5,245
XES15E-1218-12EE	(3) 1.1	129,028	13,629	6,065	3,051	5,480	3,607	5,693	5,820	5,652
XES15E-1218-12FE	(3) 1.5	142,151	13,656	6,093	3,051	5,480	3,607	5,693	5,820	5,652
XES15E-1218-12GE	(3) 2.2	159,342	13,697	6,134	3,083	5,480	3,607	5,693	5,820	5,652
XES15E-1218-12HE	(3) 4	191,855	13,711	6,147	3,096	5,480	3,607	5,693	5,820	5,652
XES15E-1218-12JE	(3) 5.5	210,425	13,779	6,215	3,164	5,480	3,607	5,693	5,820	5,652

**NOTES:**



1. Operating weight is based on the water level in the cold water basin at overflow height. If a lower operating weight is needed to meet design requirements, your local BAC Representative can provide additional assistance.
2. Unless otherwise indicated all connections 3" and smaller are MPT. Connections 4" and larger are beveled for welding and mechanically grooved.

**Do not use for construction. Refer to factory certified dimensions. This catalog includes data current at the time of publication, which should be reconfirmed at the time of purchase.**

# Series 1500E Double Cell Unit Data

Model Number	Motor (kw)	Fan (m <sup>3</sup> /h)	Weight(kg)			Dimensions (mm)				
			Operating <sup>[2]</sup>	Shipping	Heaviest Section	L	W	H	H1	A
S15E-0809-06GE-2	(3) 2.2x2	124,778	6,746	3,469	1,734	5,537	2,394	3,058	3,058	3,016
S15E-0809-06HE-2	(3) 4x2	146,959	6,774	3,496	1,748	5,537	2,394	3,058	3,058	3,016
S15E-0812-06GE-2	(3) 2.2x2	137,754	8,989	4,159	2,079	7,366	2,394	3,058	3,058	3,016
S15E-0812-06HE-2	(3) 4x2	162,838	9,016	4,186	2,093	7,366	2,394	3,058	3,058	3,016
S15E-0812-06JE-2	(3) 5.5x2	180,326	9,153	4,322	2,161	7,366	2,394	3,058	3,058	3,016
S15E-1012-06HE-2	(2) 4x2	173,325	10,215	4,876	2,438	7,366	2,997	3,048	3,121	3,016
S15E-1012-06JE-2	(2) 5.5x2	191,195	10,306	4,967	2,483	7,366	2,997	3,048	3,121	3,016
S15E-1012-06KE-2	(2) 7.5x2	211,881	10,333	4,994	2,497	7,366	2,997	3,048	3,121	3,016
S15E-1012-09JE-2	(2) 5.5x2	222,584	13,284	6,401	1,916	7,366	2,997	4,321	4,388	4,280
S15E-1012-09KE-2	(2) 7.5x2	246,362	13,311	6,429	1,930	7,366	2,997	4,321	4,388	4,280
S15E-1012-09L1-2	(2) 11x2	261,797	13,538	6,656	2,043	7,366	2,997	4,321	4,388	4,280
S15E-1012-09LE-2	(2) 11x2	276,564	13,538	6,656	2,043	7,366	2,997	4,321	4,388	4,280
S15E-1012-10JE-2	(2) 5.5x2	229,785	13,838	6,701	1,916	7,366	2,997	4,728	4,794	4,686
S15E-1012-10KE-2	(2) 7.5x2	254,342	13,865	6,728	1,930	7,366	2,997	4,728	4,794	4,686
S15E-1012-10L1-2	(2) 11x2	270,269	14,092	6,955	2,043	7,366	2,997	4,728	4,794	4,686
S15E-1012-10LE-2	(2) 11x2	285,496	14,092	6,955	2,043	7,366	2,997	4,728	4,794	4,686
S15E-1018-09JE-2	(3) 5.5x2	335,283	21,538	9,924	2,928	11,024	2,997	4,474	4,601	4,432
S15E-1018-09KE-2	(3) 7.5x2	371,156	21,574	9,961	2,946	11,024	2,997	4,474	4,601	4,432
S15E-1018-09LE-2	(3) 11x2	416,722	21,919	10,306	3,119	11,024	2,997	4,474	4,601	4,432
S15E-1018-10JE-2	(3) 5.5x2	346,010	22,537	10,333	2,928	11,024	2,997	4,880	5,007	4,839
S15E-1018-10KE-2	(3) 7.5x2	383,056	22,573	10,369	2,946	11,024	2,997	4,880	5,007	4,839
S15E-1018-10LE-2	(3) 11x2	430,059	22,918	10,714	3,119	11,024	2,997	4,880	5,007	4,839
S15E-1212-07JE-2	(2) 5.5x2	222,280	12,857	5,729	2,865	7,366	3,607	3,454	3,527	3,413
S15E-1212-07KE-2	(2) 7.5x2	245,271	12,885	5,757	2,878	7,366	3,607	3,454	3,527	3,413
S15E-1212-07L1-2	(2) 11x2	260,191	13,112	5,984	2,992	7,366	3,607	3,454	3,527	3,413
S15E-1212-09JE-2	(2) 5.5x2	250,072	15,227	7,318	2,111	7,366	3,607	4,321	4,388	4,280
S15E-1212-09KE-2	(2) 7.5x2	275,654	15,254	7,346	2,125	7,366	3,607	4,321	4,388	4,280
S15E-1212-09L1-2	(2) 11x2	292,222	15,481	7,573	2,238	7,366	3,607	4,321	4,388	4,280
S15E-1212-09LE-2	(2) 11x2	308,075	15,481	7,573	2,238	7,366	3,607	4,321	4,388	4,280
S15E-1212-10KE-2	(2) 7.5x2	287,564	15,899	7,673	2,125	7,366	3,607	4,728	4,794	4,686
S15E-1212-10L1-2	(2) 11x2	304,781	16,126	7,900	2,238	7,366	3,607	4,728	4,794	4,686
S15E-1212-10LE-2	(2) 11x2	321,239	16,126	7,900	2,238	7,366	3,607	4,728	4,794	4,686
S15E-1212-10ME-2	(2) 15x2	352,843	16,235	8,009	2,293	7,366	3,607	4,728	4,794	4,686
S15E-1212-11KE-2	(2) 7.5x2	298,005	16,689	7,999	2,125	7,366	3,607	5,134	5,201	5,093
S15E-1212-11LE-2	(2) 11x2	332,723	16,916	8,226	2,238	7,366	3,607	5,134	5,201	5,093
S15E-1212-11ME-2	(2) 15x2	365,274	17,025	8,335	2,293	7,366	3,607	5,134	5,201	5,093
S15E-1212-12KE-2	(2) 7.5x2	307,236	17,025	8,335	2,125	7,366	3,607	5,540	5,607	5,499
S15E-1212-12LE-2	(2) 11x2	342,880	17,252	8,562	2,238	7,366	3,607	5,540	5,607	5,499
S15E-1212-12ME-2	(2) 15x2	376,273	17,361	8,671	2,293	7,366	3,607	5,540	5,607	5,499



Model Number	Motor (kw)	Fan (m <sup>3</sup> /h)	Weight(kg)			Dimensions (mm)				
			Operating <sup>[2]</sup>	Shipping	Heaviest Section	L	W	H	H1	A
S15E-1218-07JE-2	(3) 5.5x2	335,835	21,311	8,789	4,395	11,024	3,607	3,607	3,740	3,566
S15E-1218-07KE-2	(3) 7.5x2	370,604	21,347	8,826	4,413	11,024	3,607	3,607	3,740	3,566
S15E-1218-07L1-2	(3) 11x2	393,170	21,692	9,171	4,585	11,024	3,607	3,607	3,740	3,566
S15E-1218-09JE-2	(3) 5.5x2	377,421	24,716	11,014	3,164	11,024	3,607	4,474	4,601	4,432
S15E-1218-09KE-2	(3) 7.5x2	416,131	24,752	11,050	3,183	11,024	3,607	4,474	4,601	4,432
S15E-1218-09L1-2	(3) 11x2	441,158	25,097	11,395	3,355	11,024	3,607	4,474	4,601	4,432
S15E-1218-09LE-2	(3) 11x2	465,106	25,097	11,395	3,355	11,024	3,607	4,474	4,601	4,432
S15E-1218-10KE-2	(3) 7.5x2	433,953	25,932	11,513	3,183	11,024	3,607	4,880	5,007	4,839
S15E-1218-10L1-2	(3) 11x2	459,967	26,278	11,858	3,355	11,024	3,607	4,880	5,007	4,839
S15E-1218-10LE-2	(3) 11x2	484,833	26,278	11,858	3,355	11,024	3,607	4,880	5,007	4,839
S15E-1218-10ME-2	(3) 15x2	532,577	26,441	12,022	3,437	11,024	3,607	4,880	5,007	4,839
S15E-1218-11KE-2	(3) 7.5x2	449,611	26,641	11,986	3,183	11,024	3,607	5,286	5,413	5,245
S15E-1218-11L1-2	(3) 11x2	476,437	26,986	12,331	3,355	11,024	3,607	5,286	5,413	5,245
S15E-1218-11LE-2	(3) 11x2	502,065	26,986	12,331	3,355	11,024	3,607	5,286	5,413	5,245
S15E-1218-11ME-2	(3) 15x2	551,236	27,149	12,494	3,437	11,024	3,607	5,286	5,413	5,245
S15E-1218-12KE-2	(3) 7.5x2	463,447	27,594	12,467	3,183	11,024	3,607	5,693	5,820	5,652
S15E-1218-12L1-2	(3) 11x2	490,993	27,939	12,812	3,355	11,024	3,607	5,693	5,820	5,652
S15E-1218-12LE-2	(3) 11x2	517,297	27,939	12,812	3,355	11,024	3,607	5,693	5,820	5,652
S15E-1218-12ME-2	(3) 15x2	567,739	28,103	12,975	3,437	11,024	3,607	5,693	5,820	5,652

**NOTES:**

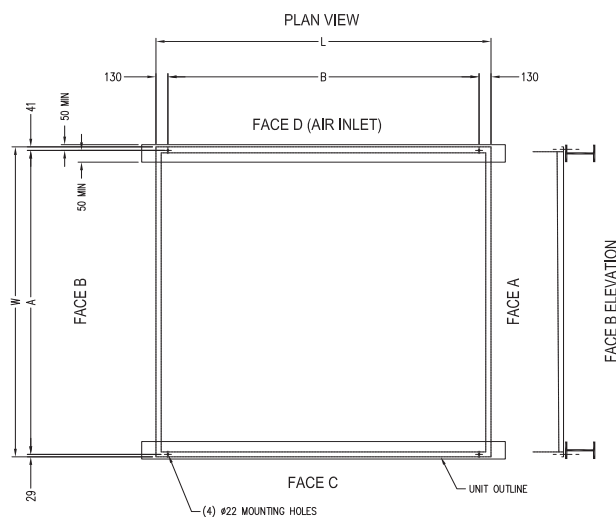


1. Operating weight is based on the water level in the cold water basin at overflow height. If a lower operating weight is needed to meet design requirements, your local BAC Representative can provide additional assistance.
2. Unless otherwise indicated all connections 3" and smaller are MPT. Connections 4" and larger are beveled for welding and mechanically grooved.

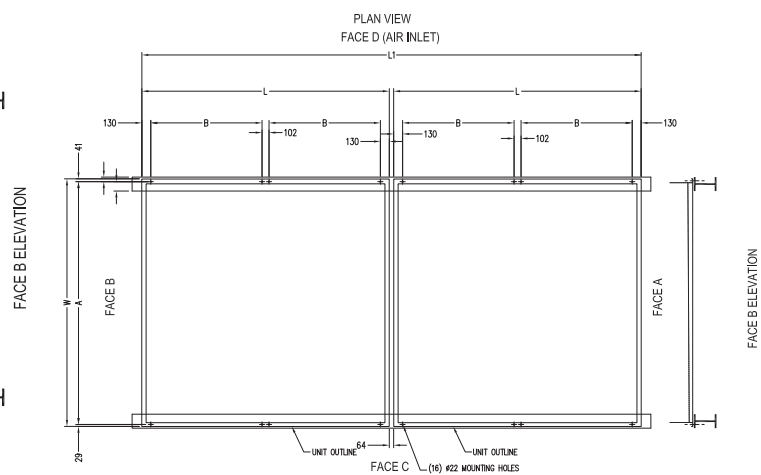
**Do not use for construction. Refer to factory certified dimensions. This catalog includes data current at the time of publication, which should be reconfirmed at the time of purchase.**

# Series 1500E Structural Support

The recommended support arrangement for the Series 1500E Cooling Tower consists of parallel I-beams positioned as shown in the following drawings. Besides providing adequate support, the steel also serves to raise the unit above any solid foundation to ensure access to the bottom of the tower. The Series 1500E may also be supported on columns at the anchor bolt locations shown in Plan A. A minimum 300mm x 300mm bearing surface must be provided under each of the concentrated load points. The support beams may also be run in the direction perpendicular to the beams shown below (Plan B). To support a Series 1500E Cooling Tower on columns or in an alternate steel support arrangement, consult your local BAC Representative.



Plan A: Single Cell Unit

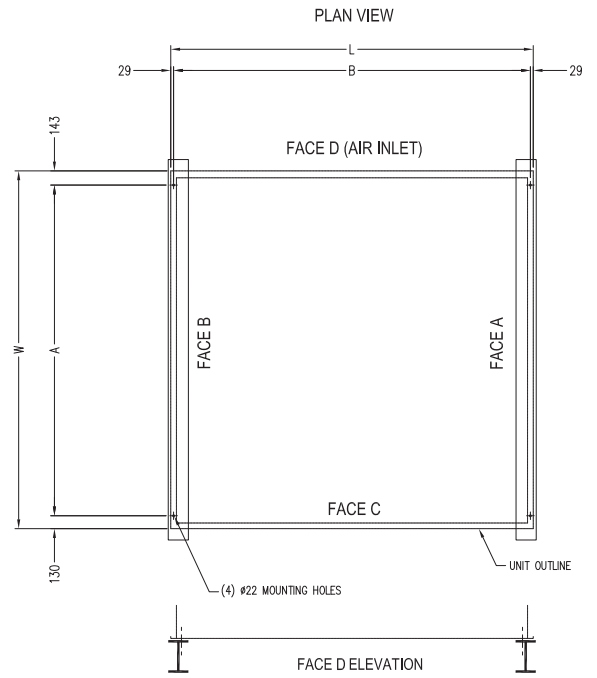


Plan A: Double Cell Unit

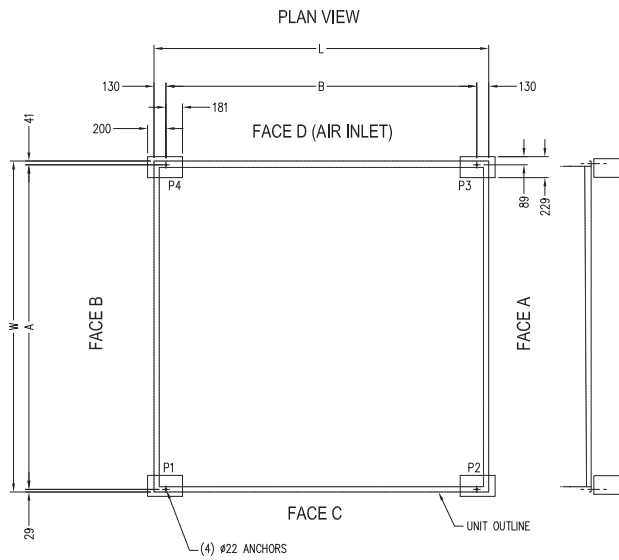
Model Number	A(mm)	B(mm)	W(mm)	L(mm)	L1(mm)
S15E/XES15E-0809	2,324	2,477	2,394	2,737	5,538
S15E/XES15E-0812	2,324	3,391	2,394	3,651	7,366
S15E/XES15E-1012	2,927	3,391	2,997	3,651	7,366
S15E/XES15E-1018	2,927	2,559	2,997	5,480	11,024
S15E/XES15E-1212	3,537	3,391	3,607	3,651	7,366
S15E/XES15E-1218	3,537	2,559	3,607	5,480	11,024



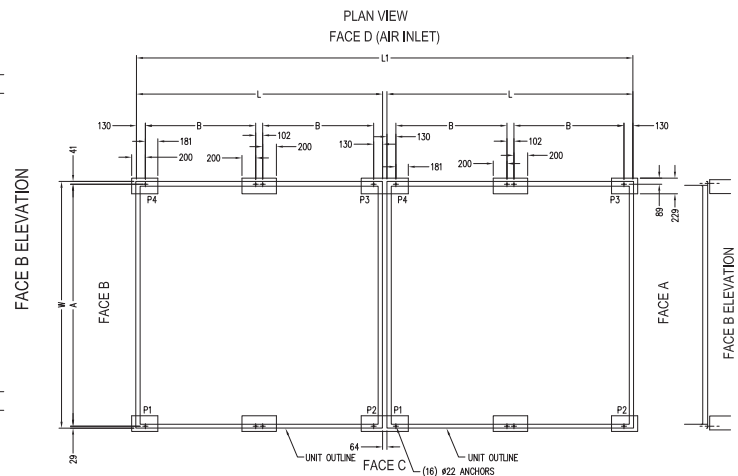
Model Number	A (mm)	B (mm)	W (mm)	L (mm)
S15E/XES15E-0809	2,121	2,680	2,394	2,737
S15E/XES15E-0812	2,121	3,594	2,394	3,651
S15E/XES15E-1012	2,724	3,594	2,997	3,651
S15E/XES15E-1018	2,927	2,559	2,997	5,480
S15E/XES15E-1212	3,334	3,594	3,607	3,651
S15E/XES15E-1218	3,537	2,559	3,607	5,480



Plan B: Single Cell Unit



Point Support: Single Cell Unit

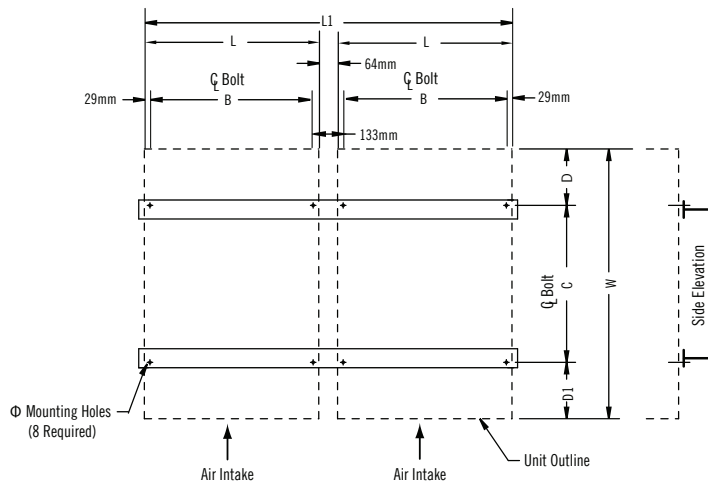


Point Support: Double Cell Unit

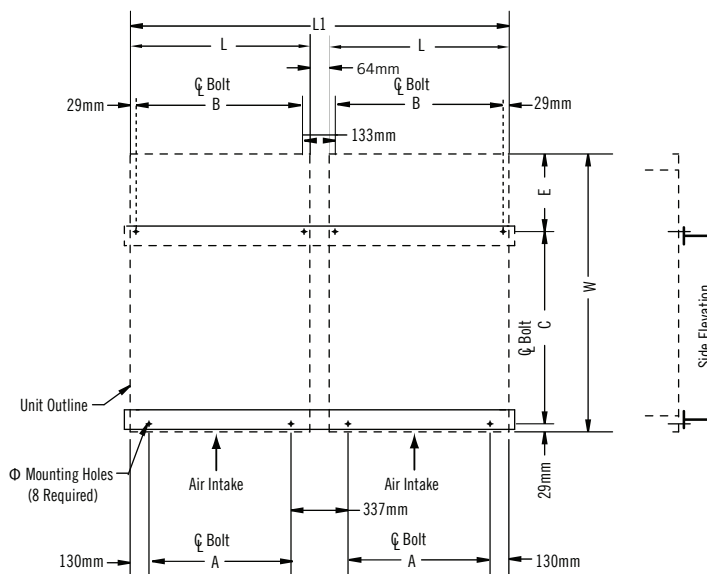
Model Number	A (mm)	B (mm)	W (mm)	L (mm)	L1 (mm)
S15E/XES15E-0809	2,324	2,477	2,394	2,737	5,538
S15E/XES15E-0812	2,324	3,391	2,394	3,651	7,366
S15E/XES15E-1012	2,927	3,391	2,997	3,651	7,366
S15E/XES15E-1018	2,927	2,559	2,997	5,480	11,024
S15E/XES15E-1212	3,537	3,391	3,607	3,651	7,366
S15E/XES15E-1218	3,537	2,559	3,607	5,480	11,024



# Series 1500E Structural Support



Plan C: Cantilever Inlet and Blank-Off (Double Cell Unit Shown)



Plan C: Cantilever Blank-Off Only (Double Cell Unit Shown)



## NOTES:

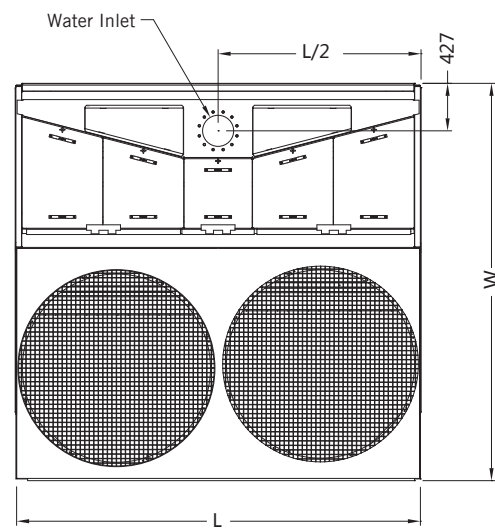
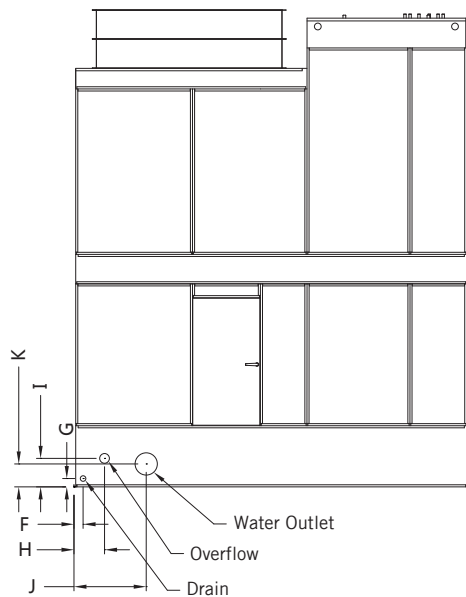
1. Support beams and anchor bolts are to be selected and installed by others.
2. All supporting steel must be level at the top.
3. Beams must be selected in accordance with accepted structural practice. Maximum deflection of beam under unit to be 1/360 of span, not to exceed 13mm..
4. If point vibrations isolation (provided by others) is used with multi-cell towers, the isolators must be located under the supporting steel, not between the support steel and the cooling towers.
5. When using Alternative Plan C support arrangements with optional bottom water outlet, size and location restrictions will apply to water outlet piping. Consider the Cantilevered Plan C support arrangement or consult your local BAC Representative for details.

Model Number	Unit Replaced	A(mm)	B(mm)	C(mm)	D(mm)	D1(mm)	E(mm)	L(mm)	L1(mm)	W(mm)
S15E/XES15E-1012	VLT/VST	3,391	3,594	2,724	137	137	244	3,651	7,366	2,997
	VXT/VXMT	3,391	3,594	2,934	32	32	35	3,651	7,366	2,997
	CFT/SERIES 3000	3,391	3,594	2,438	279	279	530	3,651	7,366	2,997
	SERIES 3000	3,391	3,594	2,896	51	51	73	3,651	7,366	2,997
S15E/XES15E-1018	VLT/VST	5,220	5,423	2,724	137	137	244	5,480	11,024	2,997
	VXT/VXMT	5,220	5,423	2,934	32	32	35	5,480	11,024	2,997
S15E/XES15E-1212	VLT/VST	3,391	3,594	2,724	441	441	841	3,651	7,366	3,607
	VXT/VXMT	3,391	3,594	2,934	337	337	632	3,651	7,366	3,607
	CFT/SERIES 3000	3,391	3,594	2,438	584	584	1,127	3,651	7,366	3,607
	SERIES 3000	3,391	3,594	2,896	356	356	670	3,651	7,366	3,607
S15E/XES15E-1218	VLT/VST	5,220	5,423	2,724	441	441	841	216	11,024	3,607
	VXT/VXMT	5,220	5,423	2,934	337	337	632	216	11,024	3,607

# Series 1500E Piping Arrangements



**NOTE:** Do not use for construction. Refer to factory certified dimensions. This catalog includes data current at the time of publication, which should be reconfirmed at the time of purchase.



Model Number	Dimensions (mm)						Top Inlet (mm)	Outlet (mm)	Make-up (mm)	Overflow (mm)	Drain (mm)
	F	G	H	I	J	K					
S15E-0809-06X	83	76	229	222	483	210	150	150	40	80	50
S15E-0812-06X	83	76	229	222	483	210	150	150	40	80	50
S15E-1012-06X	83	76	279	222	667	210	200	200	40	80	50
S15E-1012-09X	83	76	279	222	667	210	200	200	40	80	50
S15E-1012-10X	83	76	279	222	667	210	200	200	40	80	50
S15E-1018-09X	83	229	279	464	667	412	250	250	40	80	50
S15E-1018-10X	83	229	279	464	667	412	250	250	40	80	50
S15E-1212-07X	83	76	279	260	667	210	200	200	40	80	50
S15E-1212-09X	83	76	279	260	667	210	200	200	40	80	50
S15E-1212-10X	83	76	279	260	667	210	200	200	40	80	50
S15E-1212-11X	83	76	279	260	667	210	200	200	40	80	50
S15E-1212-12X	83	76	279	260	667	210	200	200	40	80	50
S15E-1218-07X	83	229	279	464	667	412	250	250	40	80	50
S15E-1218-09X	83	229	279	464	667	412	250	250	40	80	50
S15E-1218-10X	83	229	279	464	667	412	250	250	40	80	50
S15E-1218-11X	83	229	279	464	667	412	250	250	40	80	50
S15E-1218-12X	83	229	279	464	667	412	250	250	40	80	50



## NOTES FOR CONNECTION DIMENSIONS:

1. The specific size of the inlet and outlet connection may vary with the design cooling water flow rate.
2. On double cell units, connections are the same size but are located on both ends of the unit.
3. Unless otherwise indicated, all connections 3"(76mm) and smaller are male pipe thread, and connections 4"(102mm) and larger are beveled for welding and grooved to suit a mechanical coupling.



**BALTIMORE  
AIRCOIL AUSTRALIA**

---

COOLING TOWERS

---

CLOSED CIRCUIT COOLING TOWERS

---

ICE THERMAL STORAGE

---

EVAPORATIVE CONDENSERS

---

HYBRID PRODUCTS

---

PARTS & SERVICES



[www.BaltimoreAircoil.com.au](http://www.BaltimoreAircoil.com.au)

120 Wisemans Ferry Road, Somersby NSW 2250 › Telephone (Australia): 1300.134.622 › Telephone (New Zealand): 0800.225.842